



MONTHLY MEMBERSHIP PROGRESS REPORT

District 19 I

Results as of: 2/17/2014 11:17:44AM

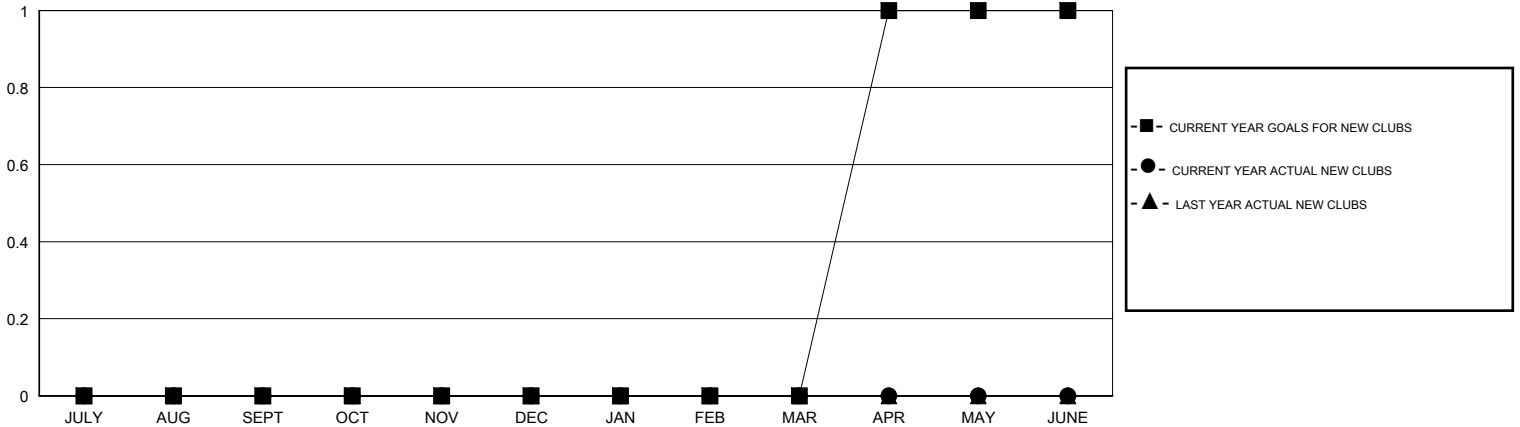
GMT: Andre Nimchuk

LOCATION WASHINGTON

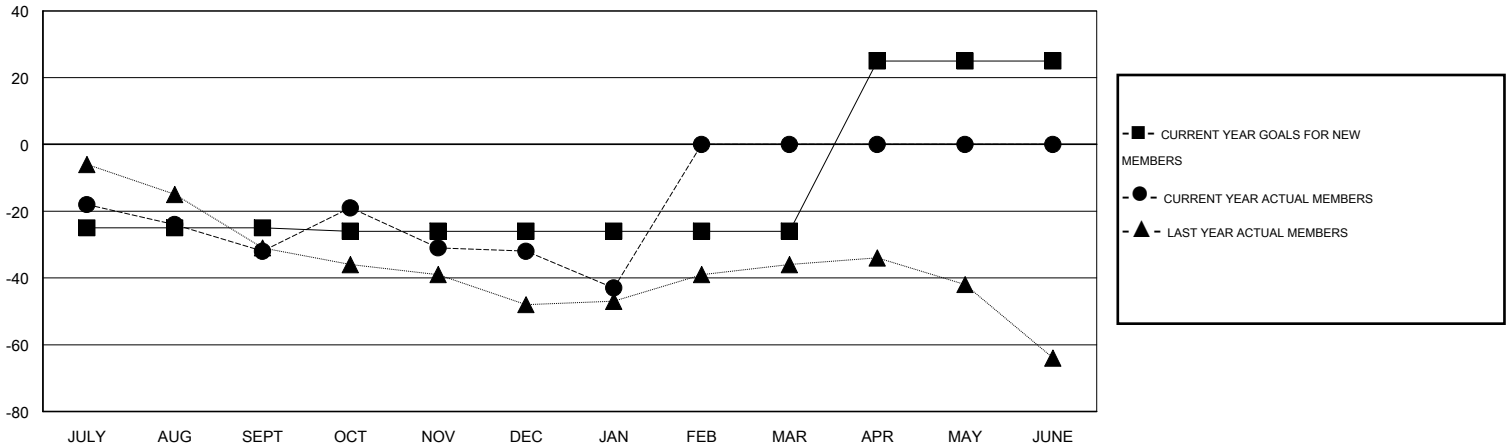
GMT CA 2

Clubs					Members				
RESULTS FOR 2013-2014					RESULTS FOR 2013-2014				
QUARTER	NEW CLUB GOAL	ACTUAL NEW CLUBS	ACTUAL DROPPED CLUBS	ACTUAL NET GAIN/LOSS	QUARTER	NEW MEMBER GOAL	ACTUAL NEW MEMBERS	ACTUAL DROPPED MEMBERS	ACTUAL NET GAIN/LOSS
JULY/AUG/SEPT	0	0	0	0	JULY/AUG/SEPT	-25	25	57	-32
OCT/NOV/DEC	0	0	0	0	OCT/NOV/DEC	-1	34	34	0
JAN/FEB/MAR	0	0	0	0	JAN/FEB/MAR	0	10	21	-11
APR/MAY/JUNE	1	0	0	0	APR/MAY/JUNE	51	0	0	0

GOALS AND ACTUAL NEW CLUBS CUMULATIVE



GOALS AND ACTUAL MEMBERS CUMULATIVE



DROPPED CLUBS: 0	28 CLUBS OF 52 ADDED 1 OR MORE NEW MEMBERS	<u>GENDER DISTRIBUTION</u>	
<u>DROPPED MEMBERS</u>		MALE	873 (70.52%)
DECEASED	20	FEMALE	365 (29.48%)
CLUB CANCELLED	0	<u>FAMILY UNIT MEMBERS</u> 205	
OTHER	92	<u>HEAD OF HOUSEHOLD</u> 101	
TOTAL	112	<u>NON-HEAD OF HOUSEHOLD</u> 104	

[CLICK HERE FOR HEALTH ASSESSMENT DATA](#)